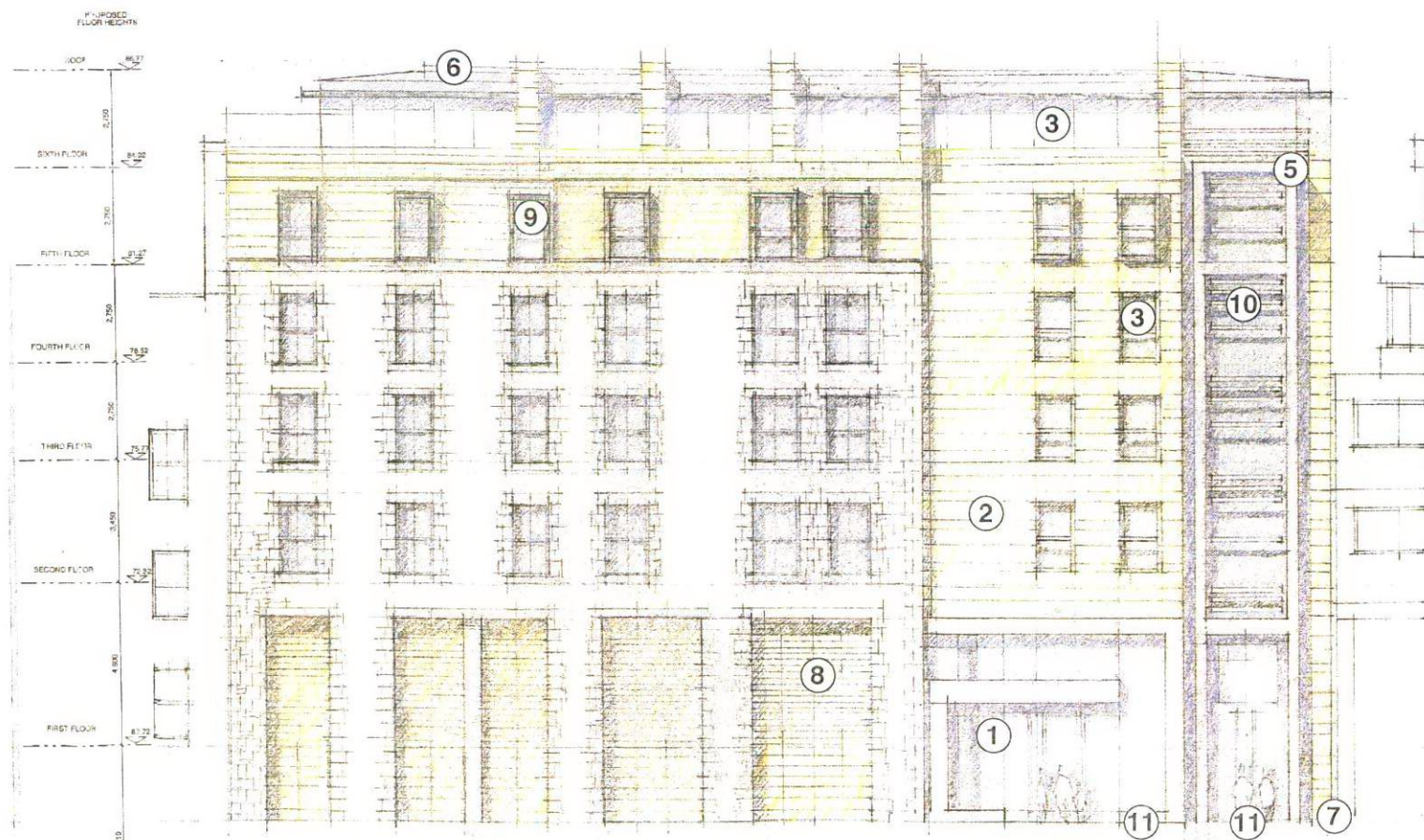
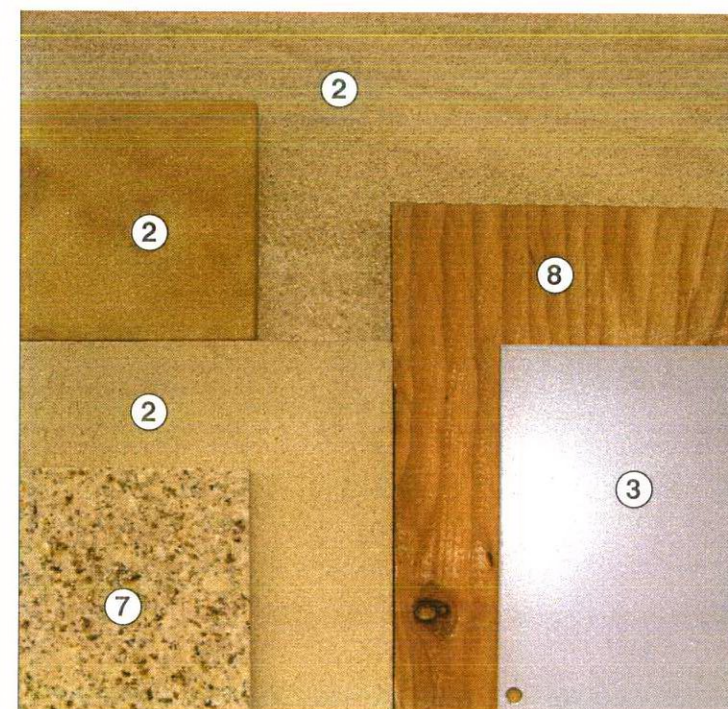
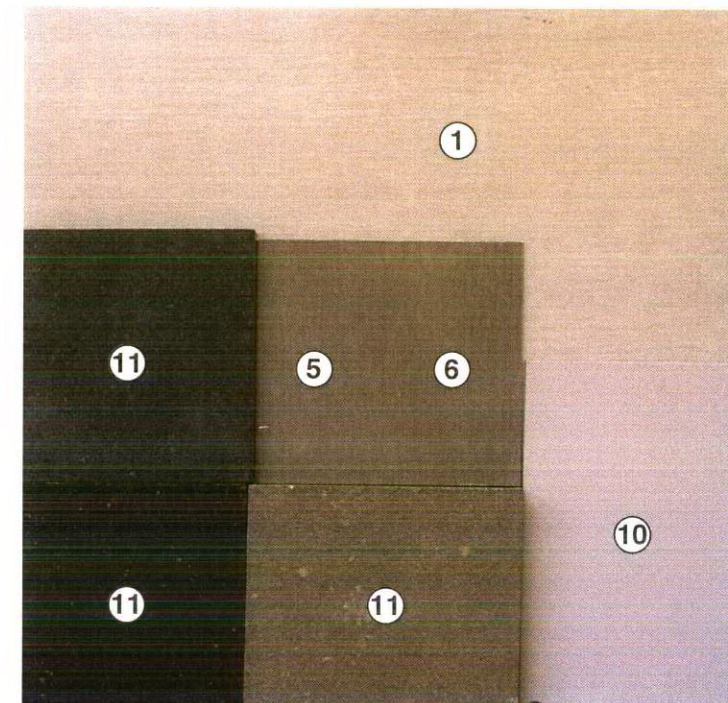


FRONT ELEVATION



REAR ELEVATION



MATERIALS

- 1. SHOPFRONT** - CLEAR DOUBLE GLAZED STRUCTURAL GLASS SYSTEM WITH COLOURED STAINLESS STEEL BOX FRAME.
- 2. MASONRY** - BUFF ASHLAR SANDSTONE CLADDING ON STAINLESS STEEL FIXINGS ON BACKING STRUCTURE.
- 3. WINDOWS** - CLEAR DOUBLE GLAZED THERMALLY BROKEN UNITS WITH POWDER COATED ALUMINIUM FRAMES.
- 4. DORMER WINDOWS** - CLEAR DOUBLE GLAZED FRAMELESS GLASS WITH ZINC COATED STAINLESS STEEL EDGES.
- 5. METAL CLADDING** - ZINC COATED STAINLESS STEEL FOLDED SHEETS ON WBP PLY AND TREATED TIMBER CARCASE.
- 6. SLOPING ROOF** - ZINC COATED STAINLESS STEEL FOLDED SHEETS ON WBP PLY AND TREATED TIMBER CARCASE.
- 7. STONE BASE COURES** - GIALLO VENEZIAND POLISHED GRANITE.
- 8. TIMBER SCREENS** - HORIZONTAL LARCH LOUVRES AND BROAD BOARD DOORS.
- 9. WINDOW SURROUND** - ZINC COATED STAINLESS STEEL FOLDED SHEETS ON WBP PLY AND TREATED TIMBER CARCASE.
- 10. ALUMINIUM LOUVRES** - POWDER COATED ALUMINIUM.
- 11. EXTERNAL PAVING** - HONED SLATE PAVING TO RETAIL AND HOTEL THRESHOLDS



Rev	Date	Details	Drawn	Checked
Issued for: PLANNING				
Project/Client		Project No	1-7-07049	
EDINBURGH:		Dwg No:	(PL) 140	
121-123 Princes Street		Rev:	-	
-		Scale:	NTS @A1	
Drawing		Drawn By:	Date	
Elevation Material Study		NMcl	-	
-		Checked By:	Date	
-		NMcl	-	

archial

18 Rothsay Place, Edinburgh EH3 7SQ
 T: +44 (0)131 229 5123 F: +44 (0)131 228 3042
 www.archialgroup.com

© Archial Architects Ltd. Contractors must work to figured dimensions which are to be checked on site.
 Registered Office: Tenison House, 101-105, Great Portland Street, London, W1P 6PR. Registered Number: 1370792