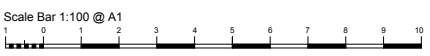


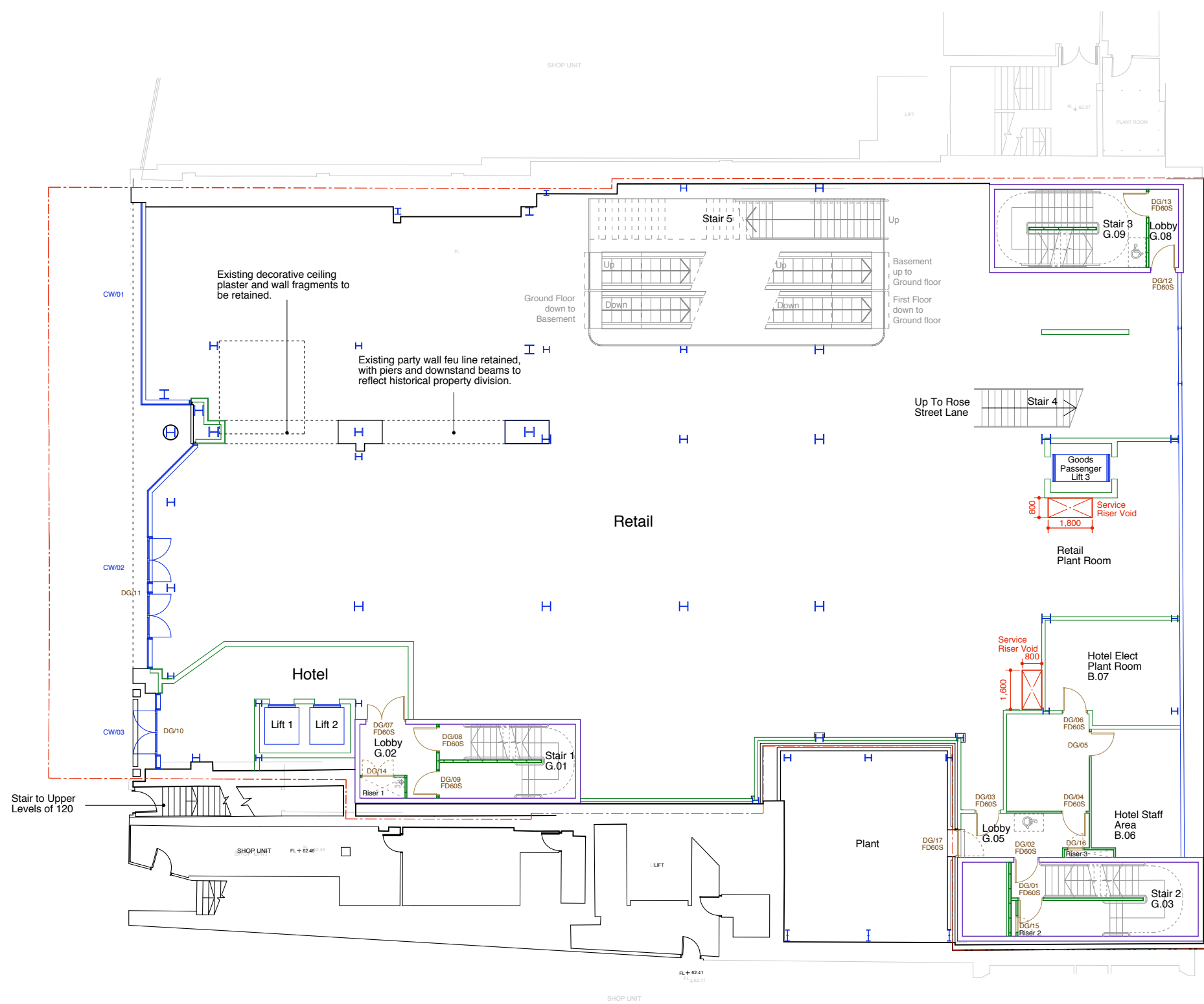
Pile cap:
Protrudes approx 600mm above basement floor, to be checked and confirmed with SE drawings

Rev.	Date	Details	Drawn	Checked
C1	12.02.10	Construction Issue	JFG	CB
E	14.09.09	general update to drawing	AWL	CB
D	01.09.09	plan revised and piling added to front of no.123	FH	CB
C	20.07.09	structural grid amended	KM	CB
B	25.06.09	insertion point, door & window refs added	AWL	CB
A	05.06.09	stairs updated, ex structure at 123 lightwell retained	AWL	CB

Issued for:

Construction	
Project/Client	EDINBURGH: 121-123 Princes Street
Project No:	1-7-07049
Dwg No:	(-)-001
Rev:	C1
Scale:	1:100 @A1
Drawing	Basement
As Proposed	
Drawn By:	CAD
Date:	03.09
Checked By:	CB
Date:	-



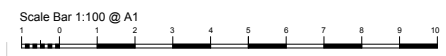


Rev.	Date	Details	Drawn	Checked
C1	12.02.10	Construction Issue	JFG	CB
G	20.10.09	Core 2 stair wall amended to Verteka	JFG	CB
F	14.09.09	general update to drawing, enclosed plant area added	AWL	CB
E	01.09.09	plan generally updated in line with current external wall layouts	FH	CB
D	20.07.09	structural grid amended	KM	CB
C	17.07.09	single door dg07 changed to a door & a half	FH	CB
B	25.06.09	insertion point, door & window refs added	AWL	CB
A	05.06.09	stairs updated, 121-122 elevation resigned	AWL	CB

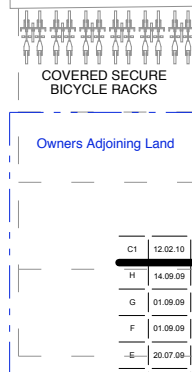
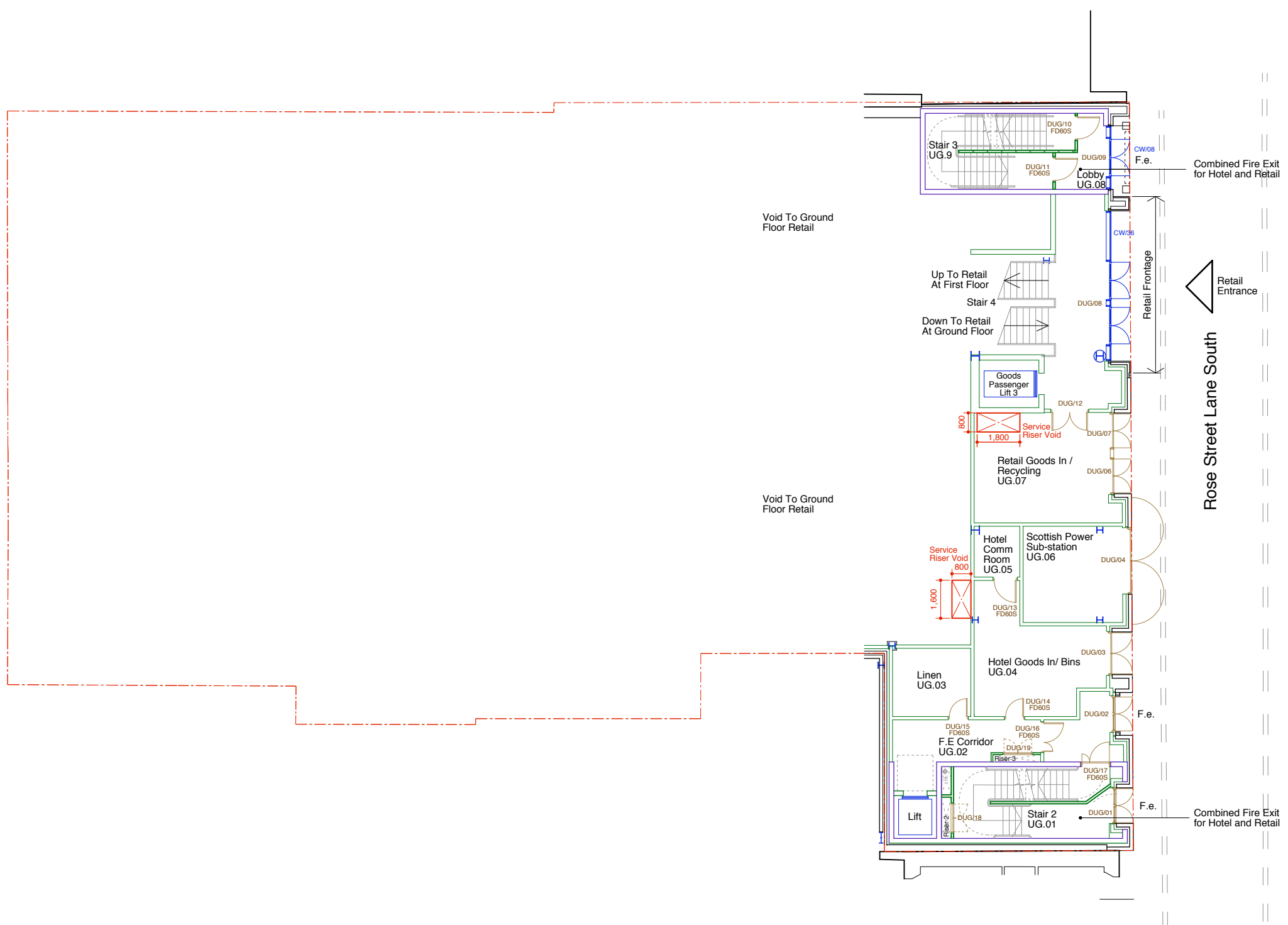
Issued for:			
Construction			
Project/Client	Project No:		
Edinburgh	1-7-07049		
121-123 Princes Street	Dwg No:	(-) 002	
-	Rev:	C1	
Drawing	Scale:	1:100 @A1	
Ground Floor Plan	Drawn By:	CAD	Date: 03.09
As Proposed	Checked By:	CB	Date: -

archial

18 Rothesay Place, Edinburgh, EH3 7SQ
 T: +44 (0)131 226 7600 F: +44 (0)131 226 3042
 www.archialgroup.com



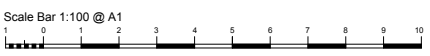
© Archial Architects Ltd. Contractors must work to figured dimensions which are to be checked on site. Registered Office - Tenison House, 159 - 165 Great Portland Street, London, W1W 5PA, Registered Number - 6787792



Rev.	Date	Details	Drawn	Checked
C1	12.02.10	Construction Issue	JFG	CB
H	14.09.09	general update to drawing, enclosed plant area added	AWL	CB
G	01.09.09	external wall amended in line with current external wall plans, dimensions of lift 3 changed.	CAD	CB
F	01.09.09	core 2 amended and plan generally updated	FH	CB
E	20.07.09	structural grid amended	XM	CB
D	25.06.09	insertion point, door & window refs added	AWL	CB
C	05.06.09	stairs updated	AWL	CB
B	29.04.09	updated in line with comments from premier	FH	CW
A	16.04.09	wine/ split store replaces beer store and doors amended to goods in area in line with comments from premier	FH	CB

Issued for:

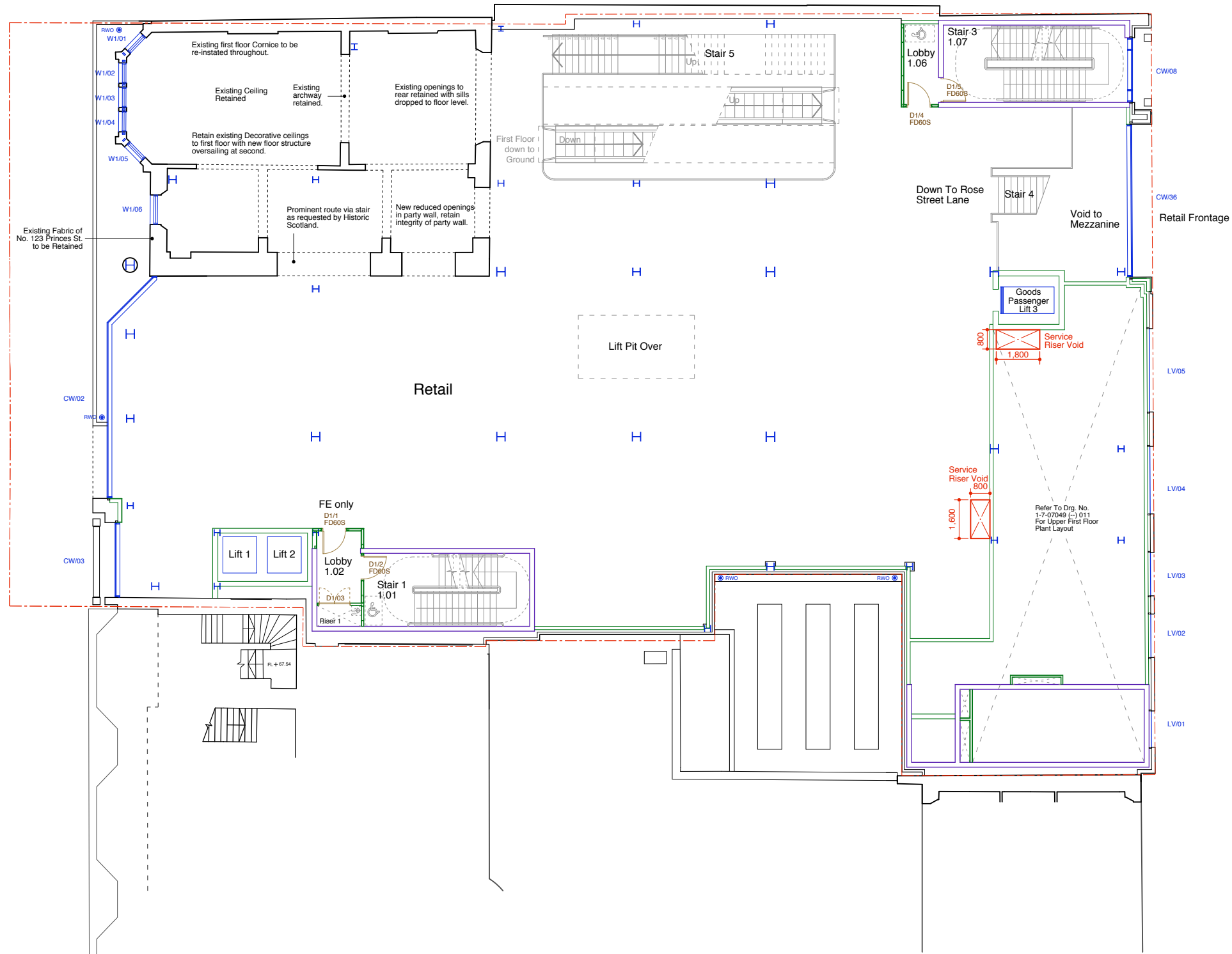
Construction	
Project/Client	Edinburgh
Project No:	1-7-07049
Dwg No:	(--)-003
Rev:	C1
Scale:	1:100 @A1
Drawing	Upper Ground Floor Plan
As Proposed	
Drawn By:	CAD
Date:	03.09
Checked By:	CB
Date:	-



archial

18 Rothesay Place, Edinburgh, EH3 7SQ
 T: +44 (0)131 226 7600 F: +44 (0)131 226 3042
 www.archialgroup.com

© Archial Architects Ltd. Contractors must work to figured dimensions which are to be checked on site.
 Registered Office - Tenison House, 159 - 165 Great Portland Street, London, W1W 5PA, Registered Number - 6787792



Rev.	Date	Details	Drawn	Checked
C1	12.02.10	Construction Issue	JFG	CB
H	14.09.09	general update to drawing enclosed plant area added	AWL	CB
G	01.09.09	generator room and lobby added to plant room plan generally updated	FH	CB
E	20.07.09	structural grid amended	XM	CB
D	25.06.09	insertion point, door & window refs added	AWL	CB
C	05.06.09	stairs updated, 121-122 elevation realigned void over hotel ent. removed	AWL	CB
B	22.05.09	stairs updated & boundary added	AWL	CB
A	16.04.09	shaded plant area increased due to relocation of hotel office area to 2nd floor	FH	CB

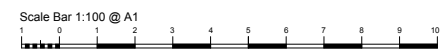
Issued for:

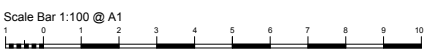
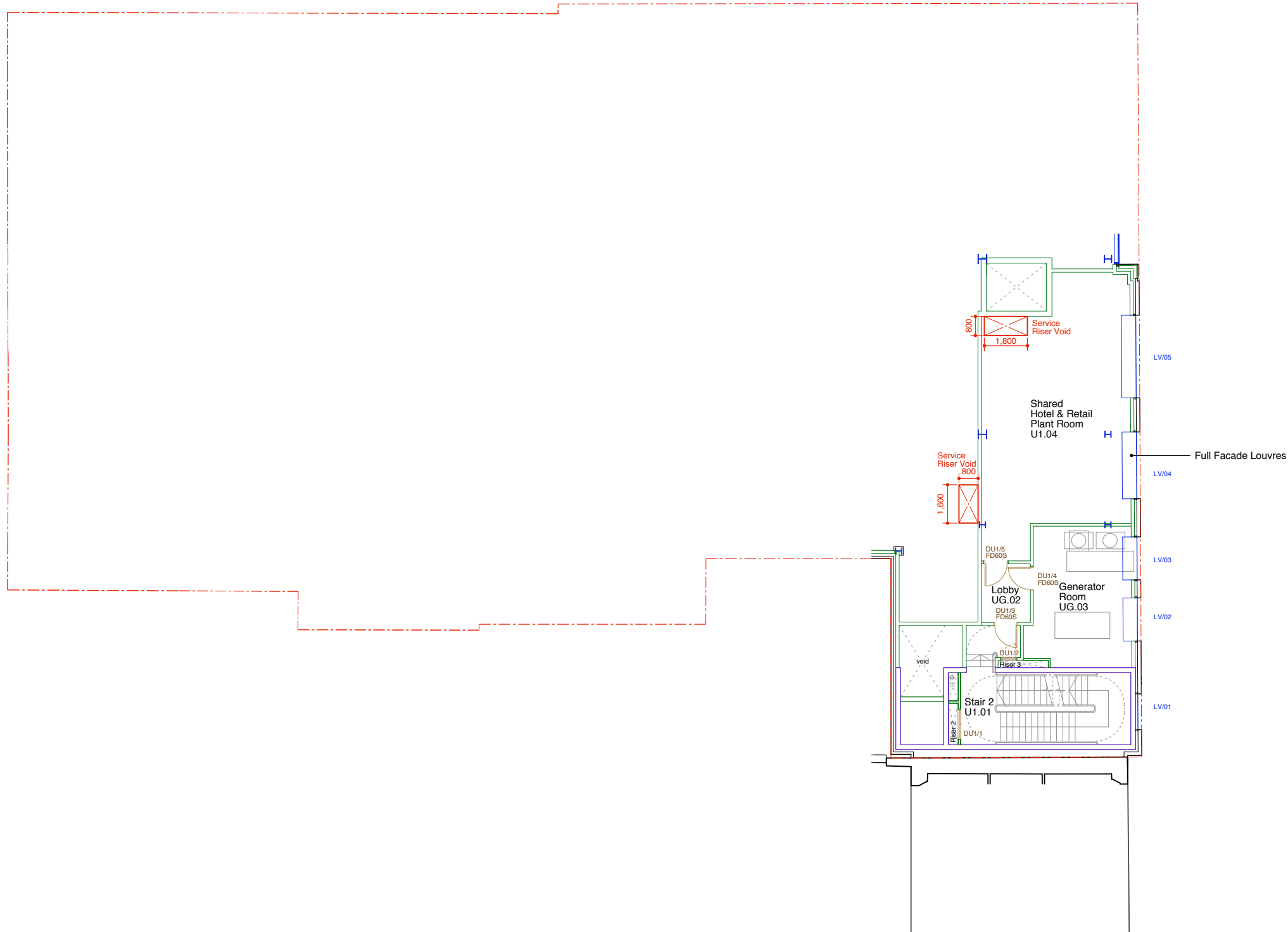
Construction	
Project/Client	Edinburgh 121-123 Princes Street
Project No:	1-7-07049
Dwg No:	(--) 004
Rev:	C1
Drawing	Scale: 1:100 @A1
First Floor Plan	As Proposed
Drawn By:	CAD
Date:	03.09
Checked By:	CB
Date:	-

archial

18 Rothesay Place, Edinburgh, EH3 7SQ
T: +44 (0)131 226 7600 F: +44 (0)131 226 3042
www.archialgroup.com

© Archial Architects Ltd. Contractors must work to figured dimensions which are to be checked on site. Registered Office - Tenison House, 159 - 165 Great Portland Street, London, W1W 9PA, Registered Number - 6787792





Rev.	Date	Details	Drawn	Checked
C1	12.02.10	Construction Issue	JFG	CB

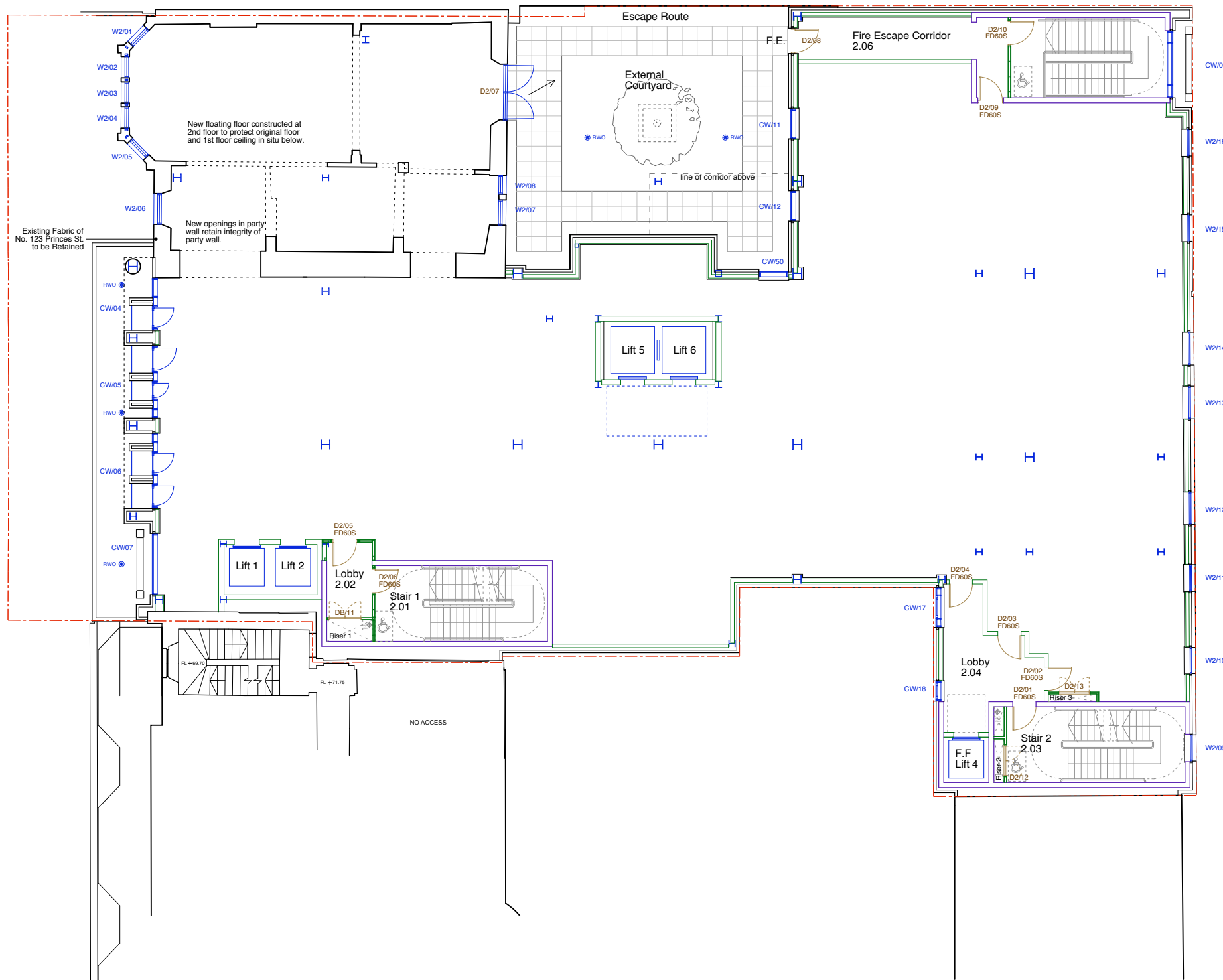
Issued for:

Construction	
Project/Client	Edinburgh
Project No:	1-7-07049
Dwg No:	(--)-011
Rev:	C1
Drawing	Upper First Floor Plan
As Proposed	
Scale:	1:100 @A1
Drawn By:	CAD
Date:	10.09
Checked By:	CB
Date:	-

archial

18 Rothesay Place, Edinburgh, EH3 7SQ
 T: +44 (0)131 226 7600 F: +44 (0)131 226 3042
 www.archialgroup.com

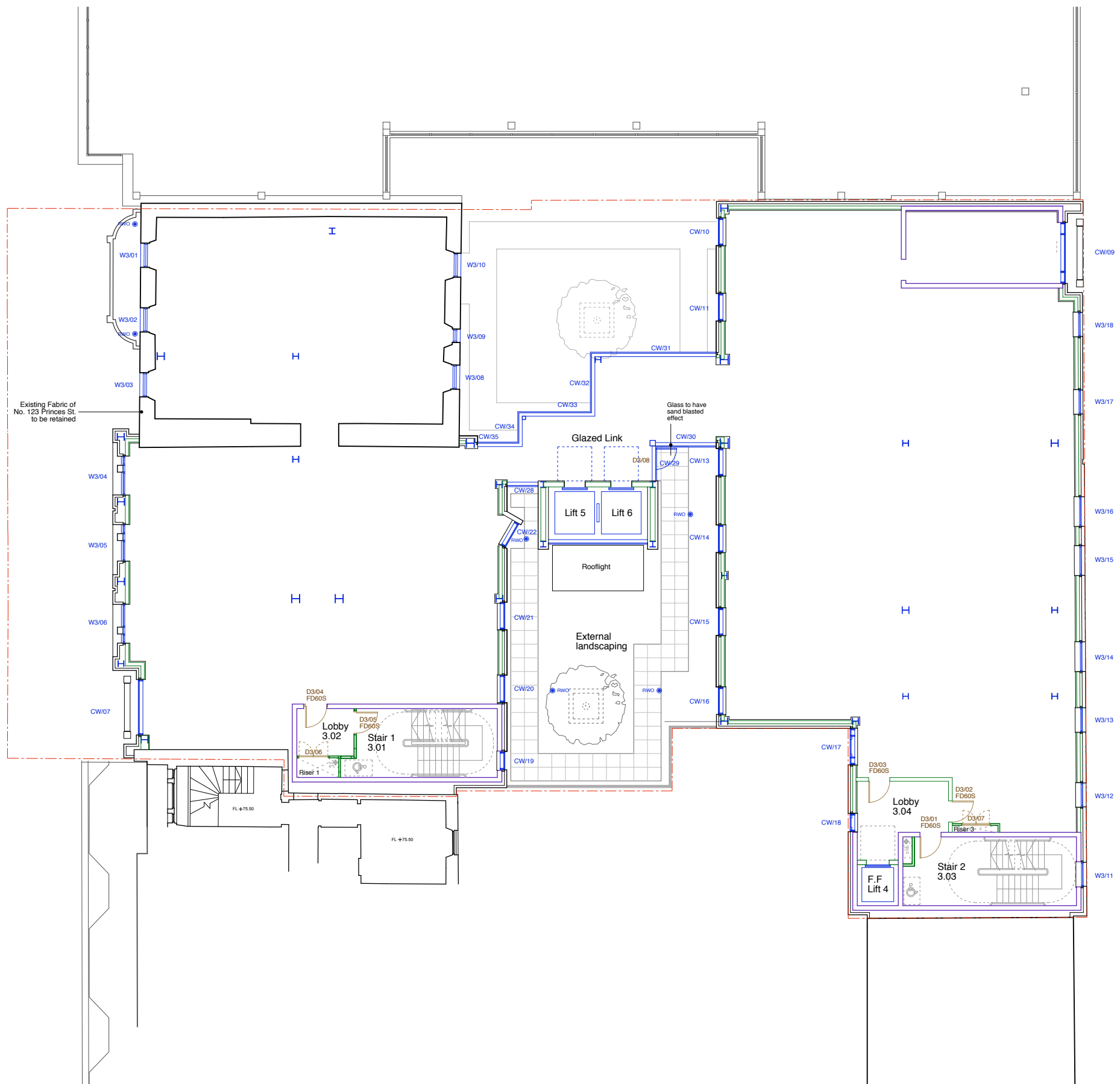
© Archial Architects Ltd. Contractors must work to figured dimensions which are to be checked on site.
 Registered Office - Tenison House, 159 - 165 Great Portland Street, London, W1W 5PA, Registered Number - 6787792



Rev.	Date	Details	Drawn	Checked
C1	12.02.10	Construction Issue	JFG	CB
PT1	05.02.10	Firing arrangement to courtyard amended to suit 600x600 paving profile	FH	JFG
I	22.10.09	Note regards the new plaster ceiling cornice to no 123 removed and added to float	FH	CB
H	14.09.09	general update to drawing, float info removed for clarity	AWL	CB
G	01.09.09	public toilet layout amended to comply with regulations, general plan updated	FH	CB
F	20.07.09	structural grid amended	KM	CB
E	25.08.09	insertion point, door & window refs added	AWL	CB
D	05.06.09	stairs updated, 121-122 elevation realigned	AWL	CB
C	22.05.09	stairs updated & boundary added	AWL	CB
B	29.04.09	back of house area updated in line with comments from premier	FH	CW
A	16.04.09	room layouts updated in line with comments from premier	FH	CB

Issued for:		Construction	
Project/Client	Edinburgh 121-123 Princes Street	Project No:	1-7-07049
		Dwg No:	(--)-005
		Rev:	C1
Drawing	Second Floor Plan	Scale:	1:100 @A1
As Proposed		Drawn By:	CAD
		Date:	03.09
		Checked By:	CB
		Date:	-

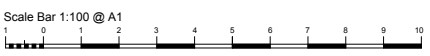




Rev.	Date	Details	Drawn	Checked
C1	12.02.10	Construction Issue	JFG	CB
PT1	02.02.10	Courtyard paving layout updated to suit 600x600 slab profile	FH	JFG
H	14.09.09	general update to drawing, float info removed for clarity	AWL	CB
G	01.09.09	glazed link adjusted to suit structure, vertical walls to core 3 taken up to 6th floor	FH	CB
F	20.07.09	structural grid amended	KM	CB
E	25.06.09	insertion point, door & window refs added	AWL	CB
D	05.06.09	stairs updated, 121-122 elevation realigned	AWL	CB
C	22.05.09	stairs updated & boundary added	AWL	CB
B	29.04.09	note added in line with comments from premier	FH	CW
A	16.04.09	window amended to D2 room to increase restricted view in line with comments from premier	FH	CB

Issued for:

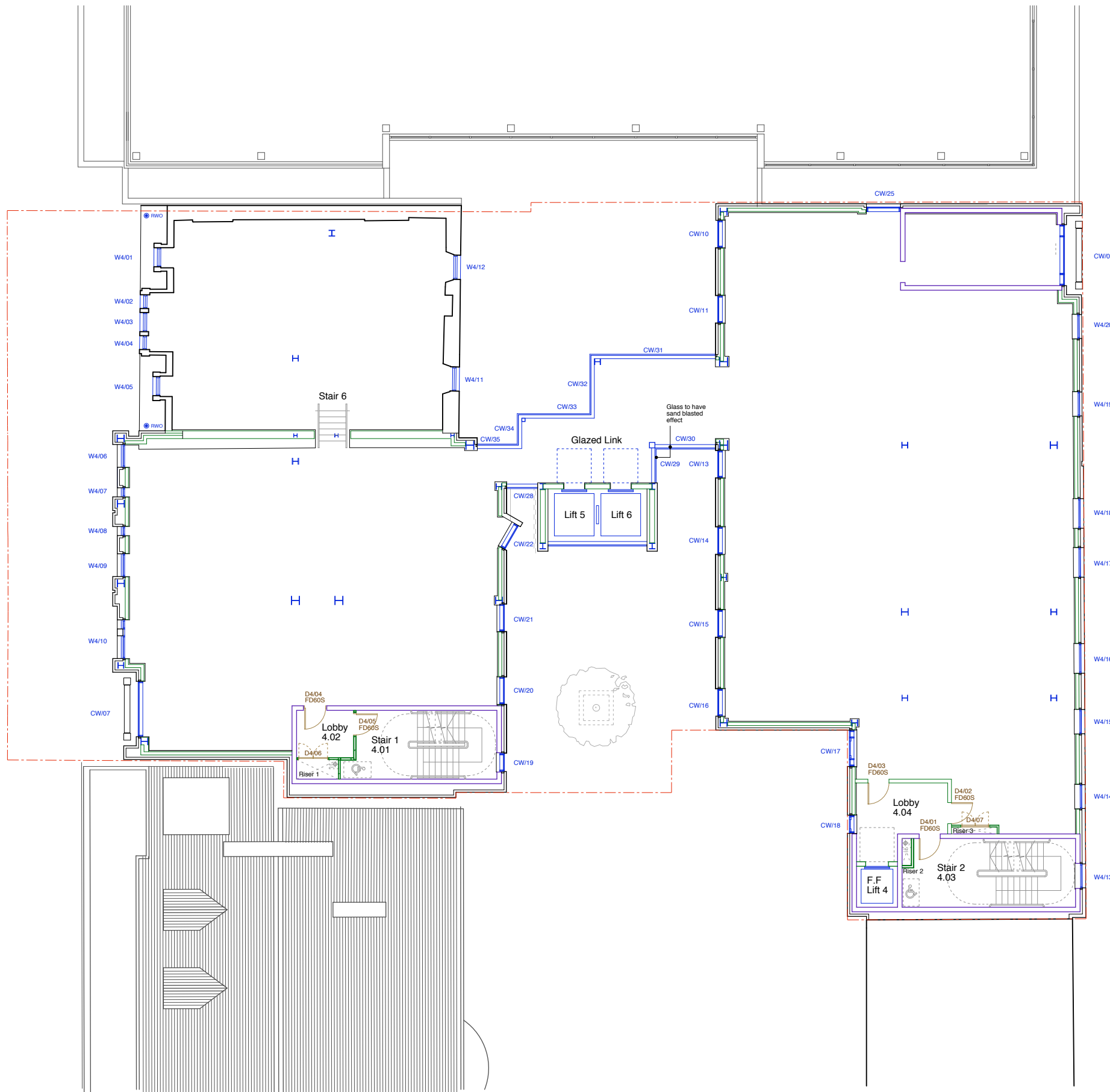
Construction	
Project/Client	Edinburgh
Project No:	1-7-07049
Dwg No:	(--)-006
Rev:	C1
Scale:	1:100 @A1
Drawing	Third Floor Plan
As Proposed	
Drawn By:	CAD
Date:	03.09
Checked By:	CB
Date:	-



archial

18 Rothesay Place, Edinburgh, EH3 7SQ
 T: +44 (0)131 226 7600 F: +44 (0)131 226 3042
 www.archialgroup.com

© Archial Architects Ltd. Contractors must work to figured dimensions which are to be checked on site.
 Registered Office - Tenison House, 159 - 165 Great Portland Street, London, W1W 5PA, Registered Number - 6787792



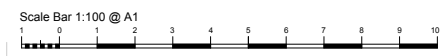
Rev.	Date	Details	Drawn	Checked
C1	12.02.10	Construction Issue	JFG	CB
I	20.09.09	Concrete wall in lay of cavitywork between 122 and 123	JFG	CB
H	14.09.09	general update to drawing, float info removed for clarity	AWL	CB
G	01.09.09	glazed link adjusted to suit structure, vertika walls to core 3 taken up to 6th floor	FH	CB
F	20.07.09	structural grid amended	KM	CB
E	25.06.09	insertion point, door & window refs added	AWL	CB
D	05.06.09	stairs updated, 121-122 elevation realigned	AWL	CB
C	22.05.09	stairs updated & boundary added	AWL	CB
B	29.04.09	note added in line with comments from premier	FH	CW
A	16.04.09	window amended to D room to increase restricted view in line with comments from premier	FH	CB

Issued for:

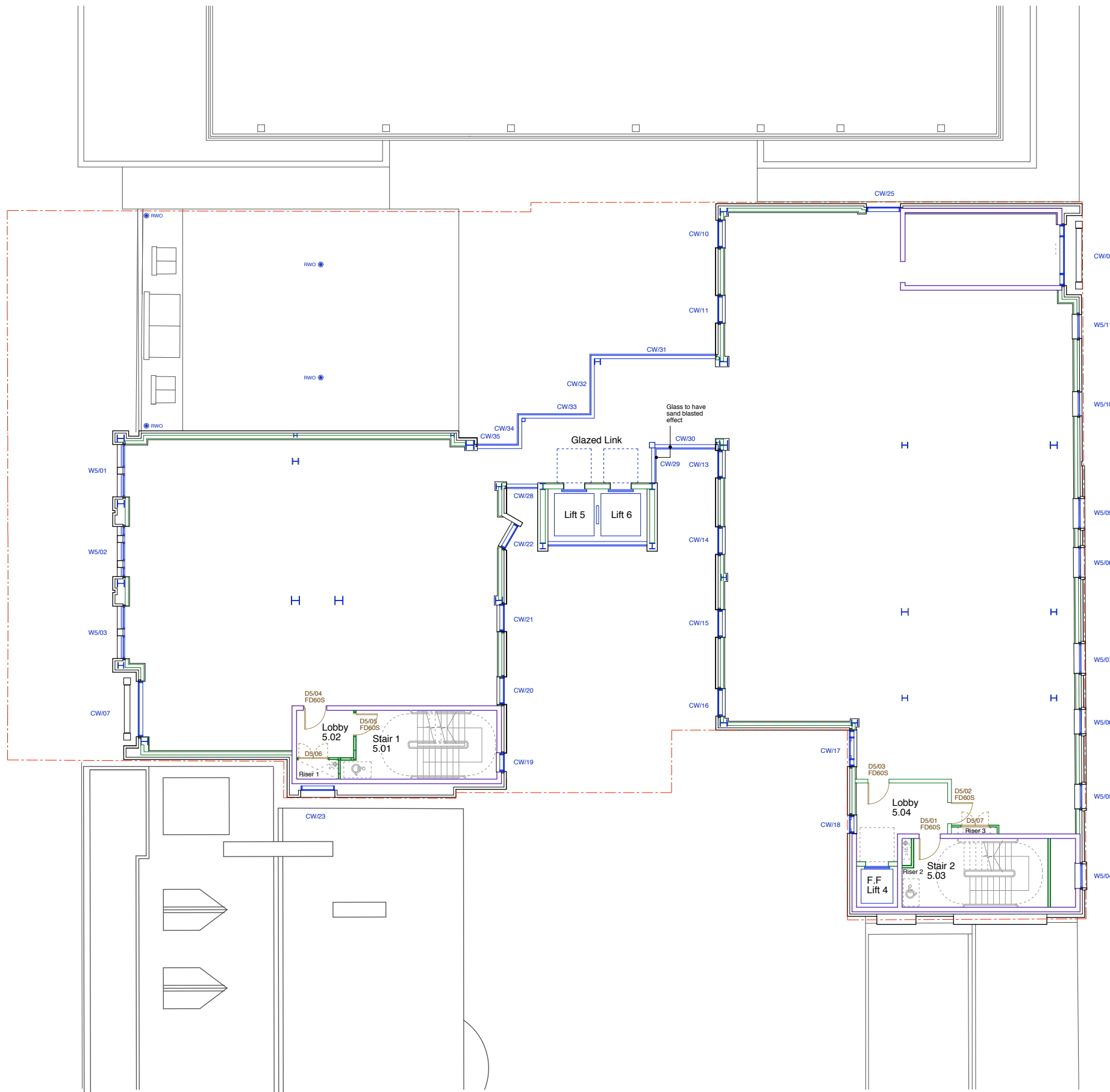
Construction	
Project/Client	Edinburgh
Project No:	1-7-07049
Dwg No:	(--)-007
Rev:	C1
Scale:	1:100 @A1
Drawing	Fourth Floor Plan
As Proposed	
Drawn By:	CAD
Date:	03.09
Checked By:	CB
Date:	-

archial

18 Rothesay Place, Edinburgh, EH3 7SQ
 T: +44 (0)131 226 7600 F: +44 (0)131 226 3042
 www.archialgroup.com



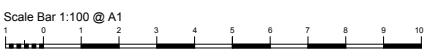
© Archial Architects Ltd. Contractors must work to figured dimensions which are to be checked on site. Registered Office - Tenison House, 159 - 165 Great Portland Street, London, W1W 9PA, Registered Number - 6787792

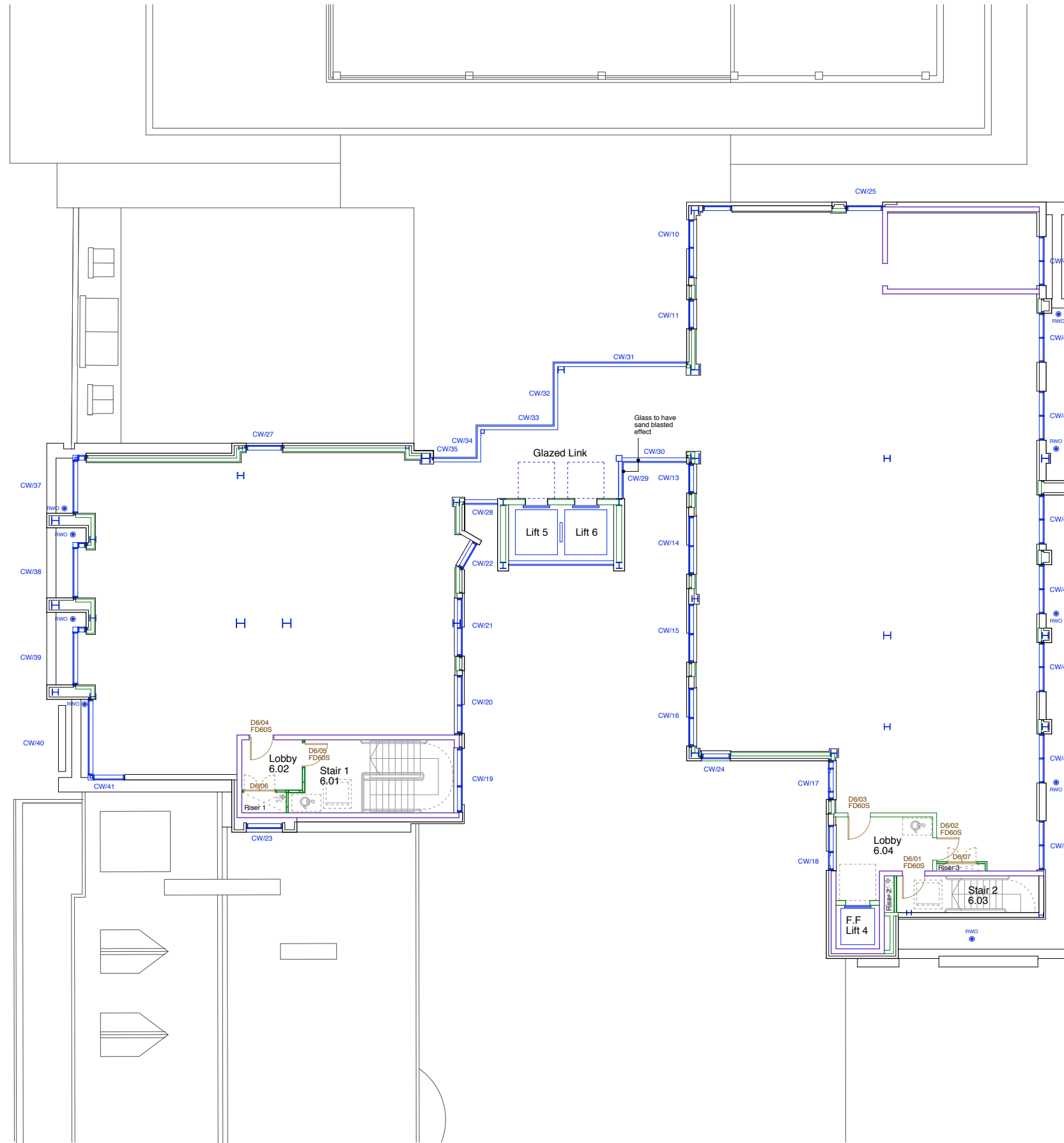


Rev.	Date	Details	Drawn	Checked
C1	12.02.10	Construction Issue	JFG	CB
H	14.09.09	general update to drawing, float info removed for clarity	AWL	CB
G	01.09.09	glazed link adjusted to suit structure, vertical walls to core 3 taken up to 6th floor	FH	CB
F	20.07.09	structural grid amended	KM	CB
E	25.06.09	insertion point, door & window refs added	AWL	CB
D	05.06.09	stairs updated, 121-122 elevation realigned	AWL	CB
C	22.05.09	stairs updated & boundary added	AWL	CB
B	29.04.09	note added in line with comments from premier	FH	CW
A	16.04.09	window amended to D room to increase restricted view in line with comments from premier	FH	CB

Issued for:

Construction	
Project/Client	Edinburgh 121-123 Princes Street
Project No:	1-7-07049
Dwg No:	(--)-008
Rev:	C1
Scale:	1:100 @A1
Drawing	Fifth Floor Plan
As Proposed	
Drawn By:	CAD
Date:	03.09
Checked By:	CB
Date:	-



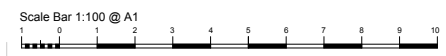


Rev.	Date	Details	Drawn	Checked
C1	12.02.10	Construction issue	JFG	CB
H	14.09.09	general update to drawing, float info removed for clarity	AWL	CB
G	01.09.09	glazed link adjusted to suit structure, vertika walls at core 3 taken up to 6th floor.	FH	CB
F	20.07.09	structural grid amended	KM	CB
E	25.06.09	insertion point, door & window refs added	AWL	CB
D	05.06.09	stairs updated, 121-122 elevation realigned	AWL	CB
C	22.05.09	stairs updated & boundary added	AWL	CB
B	29.04.09	note added in line with comments from prem.	FH	CW
A	16.04.09	window amended to D room to increase restricted view in line with comments from premier	FH	CB

Issued for:			
Construction			
Project/Client	Edinburgh	Project No:	1-7-07049
	121-123 Princes Street	Dwg No:	(--)-009
		Rev:	C1
Drawing	Sixth Floor Plan	Scale:	1:100 @A1
	As Proposed	Drawn By:	CAD
		Date:	03.09
		Checked By:	CB
		Date:	-

archial

18 Rothesay Place, Edinburgh, EH3 7SQ
 T: +44 (0)131 226 5123 F: +44 (0)131 226 3042
 www.archialgroup.com



© Archial Architects Ltd. Contractors must work to figured dimensions which are to be checked on site. Registered Office - Tenison House, 159 - 165 Great Portland Street, London, W1W 9PA, Registered Number - 6787792



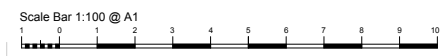
Rev.	Date	Details	Drawn	Checked
C1	12.02.10	Construction Issue	JFG	CB
PT1	22.01.10	RWO added to roof of Lit 4	JFG	CB
B	05.10.09	glazed link roof revised	AWL	CB
A	28.09.09	roof profile amended at east gable to the rear. rwp's added to the rear lane guttering	FH	CB

Issued for:

Construction	
Project/Client	Edinburgh
Project No:	1-7-07049
Dwg No:	(--)-010
Rev:	C1
Scale:	1:100 @A1
Drawing	Roof Plan
As Proposed	
Drawn By:	FH
Date:	Aug 2009
Checked By:	CB
Date:	-

archial

18 Rothesay Place, Edinburgh, EH3 7SQ
 T: +44 (0)131 226 5123 F: +44 (0)131 226 3042
 www.archialgroup.com



© Archial Architects Ltd. Contractors must work to figured dimensions which are to be checked on site. Registered Office - Tenison House, 159 - 165 Great Portland Street, London, W1W 5PA, Registered Number - 6787792