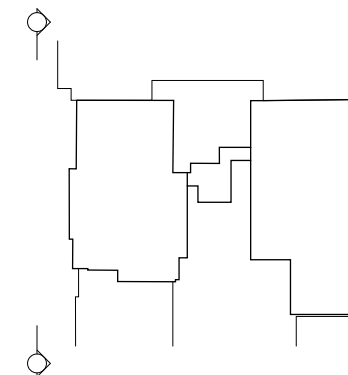
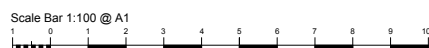


Location :



South Elevation  
Princes Street



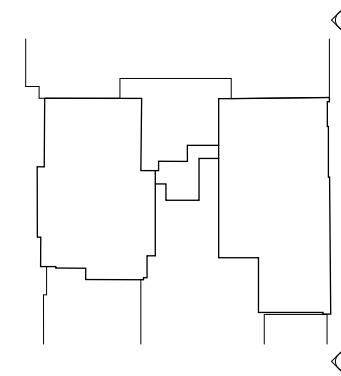
C1	12.02.10	Construction Issue	JFG	CB
PT1	25.11.09	Wall section codes added	JFG	CB
B	29.09.09	Levels amended. General update to suit GA's	FHAL	CB
A	16.06.09	Proportions changed to accommodate hotel bedrooms.	KM	NMtd
Rev.	Date	Details	Drawn	Checked

Issued for:		<b>Construction</b>	
Project/Client	Edinburgh	Project No:	1-7-07049
	121 - 123 Princes Street	Dwg No:	(-- ) 200
	-	Rev:	C1
Drawing	South Elevation	Scale:	1:100 @A1
	General Arrangement	Drawn By:	km/awl
	-	Date:	05.09
	-	Checked By:	cb
	-	Date:	05.09

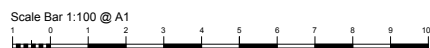
**archial**

18 Rothesay Place, Edinburgh, EH3 7SQ  
T: +44 (0)131 226 5123 F: +44 (0)131 226 3042  
www.archialgroup.com

Location :



North Elevation  
Rose Street Lane South



C1	12.02.10	Construction Issue	JFG	CB
PT1	25.11.09	Wall section codes added	JFG	CB
B	29.09.09	Levels amended. General update to suit GA's	FHAL	CB
A	23.06.09	Windows repositions to coincide with sections & frames removed	KM	JFG
Rev.	Date	Details	Drawn	Checked

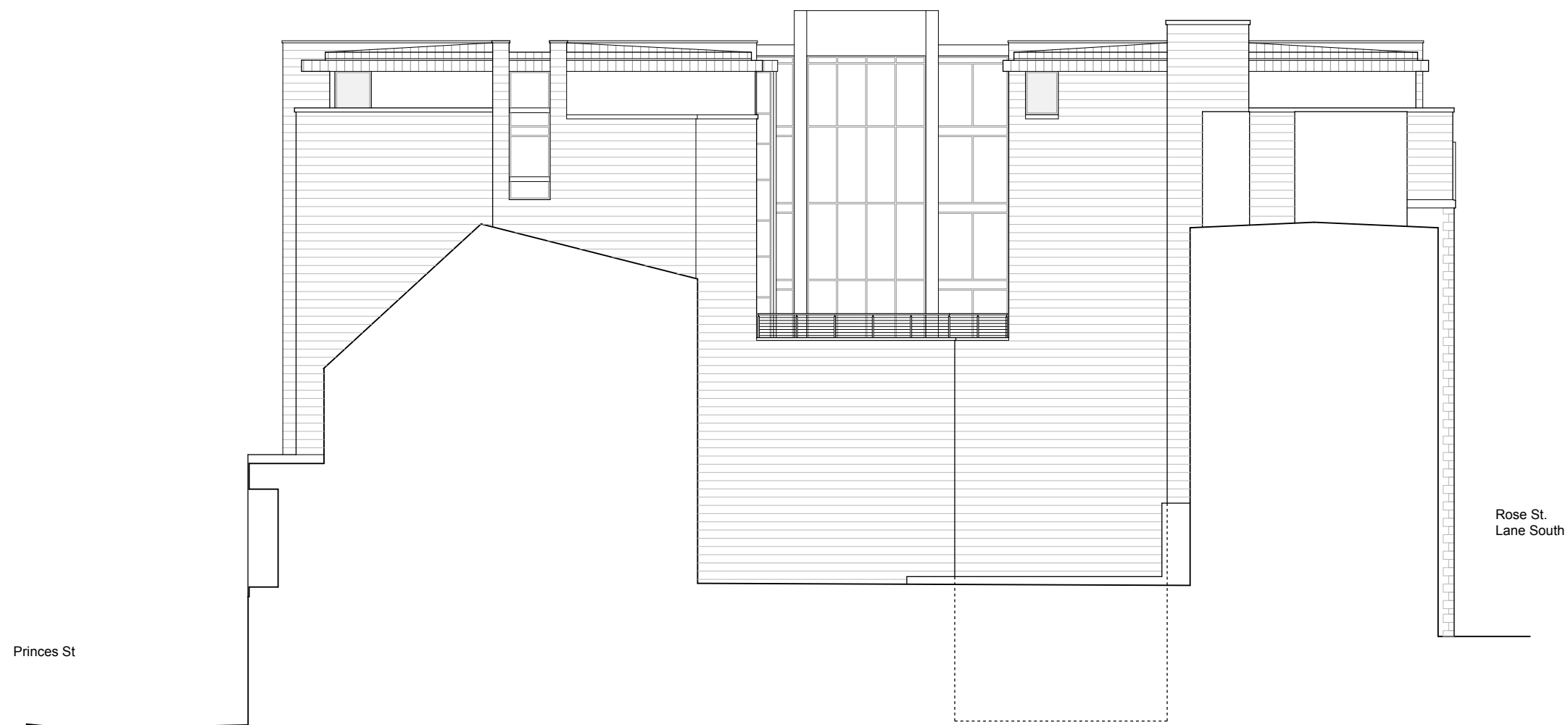
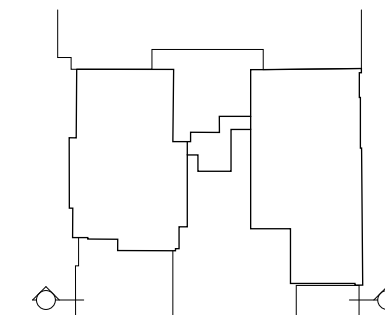
Issued for:		<b>Construction</b>	
Project/Client	Edinburgh	Project No:	1-7-07049
	121 - 123 Princes Street	Dwg No:	(--) <b>201</b>
	-	Rev:	<b>C1</b>
Drawing	North Elevation	Scale:	1:100 @A1
	General Arrangement	Drawn By:	km/awl
	-	Date:	05.09
	-	Checked By:	cb
	-	Date:	05.09

**archial**

18 Rothesay Place, Edinburgh, EH3 7SQ  
T: +44 (0)131 226 5123 F: +44 (0)131 226 3042  
www.archialgroup.com

© Archial Architects Ltd. Contractors must work to figured dimensions which are to be checked on site.  
Registered Office - Tenison House, 159 - 165 Great Portland Street, London, W1W 9PA, Registered Number - 6787792

Location :

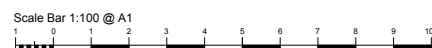


Princes St

Rose St.  
Lane South

Rev.	Date	Details	Drawn	Checked
C1	12.02.10	Construction Issue	JFG	CB
PT1	02/02/10	3rd Floor Courtyard Handrails amended inline with revised roof built up	FH	CB
B	29/09/09	Levels amended. General update to suit GA's	FH/AJ	CB
A	17.06.09	Amended to suit revised stair plan	FH	CW

Issued for:		Construction	
Project/Client	Edinburgh	Project No:	1-7-07049
	121 - 123 Princes Street	Dwg No:	(-- ) 202
	-	Rev:	C1
Drawing	East Elevation	Scale:	1:100 @A1
	General Arrangement	Drawn By:	awl
	-	Date:	05.09
	-	Checked By:	cb
	-	Date:	05.09

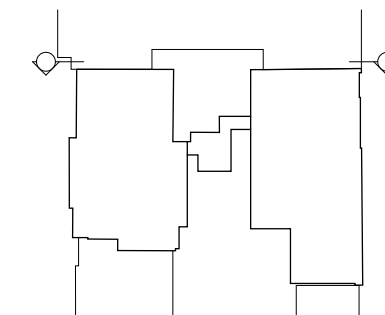


**archial**

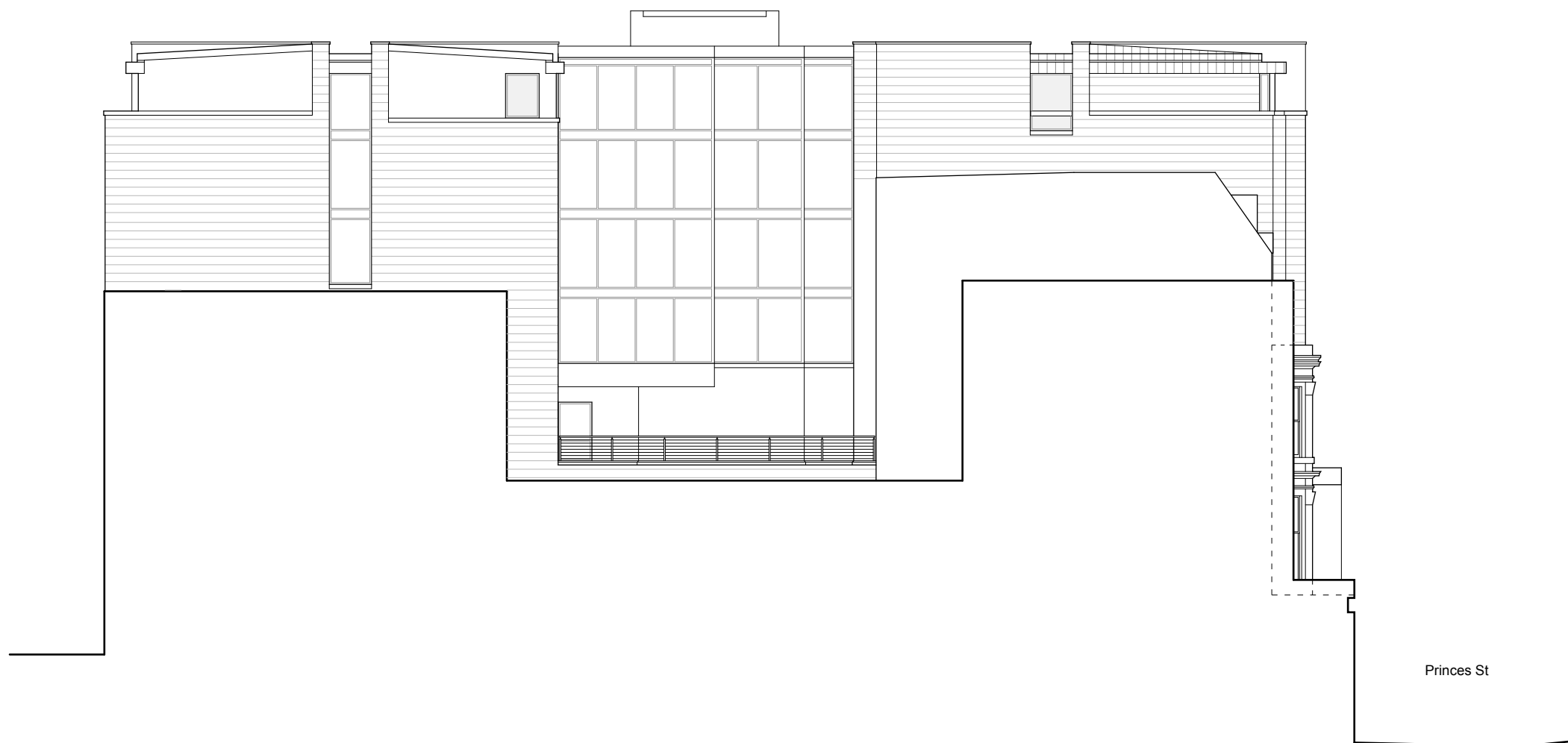
18 Rothesay Place, Edinburgh, EH3 7SQ  
T: +44 (0)131 226 5123 F: +44 (0)131 226 3042  
www.archialgroup.com

© Archial Architects Ltd. Contractors must work to figured dimensions which are to be checked on site.  
Registered Office - Tennyson House, 159 - 165 Great Portland Street, London, W1W 9PA. Registered Number - 6767762

Location :



Rose St.  
Lane South



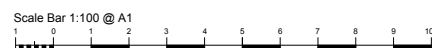
Princes St

C1	12.02.10	Construction Issue	JFG	CB
A	29/08/09	Levels amended. General update to suit GA's	FWAL	CB
Rev.	Date	Details	Drawn	Checked

Issued for:

### Construction

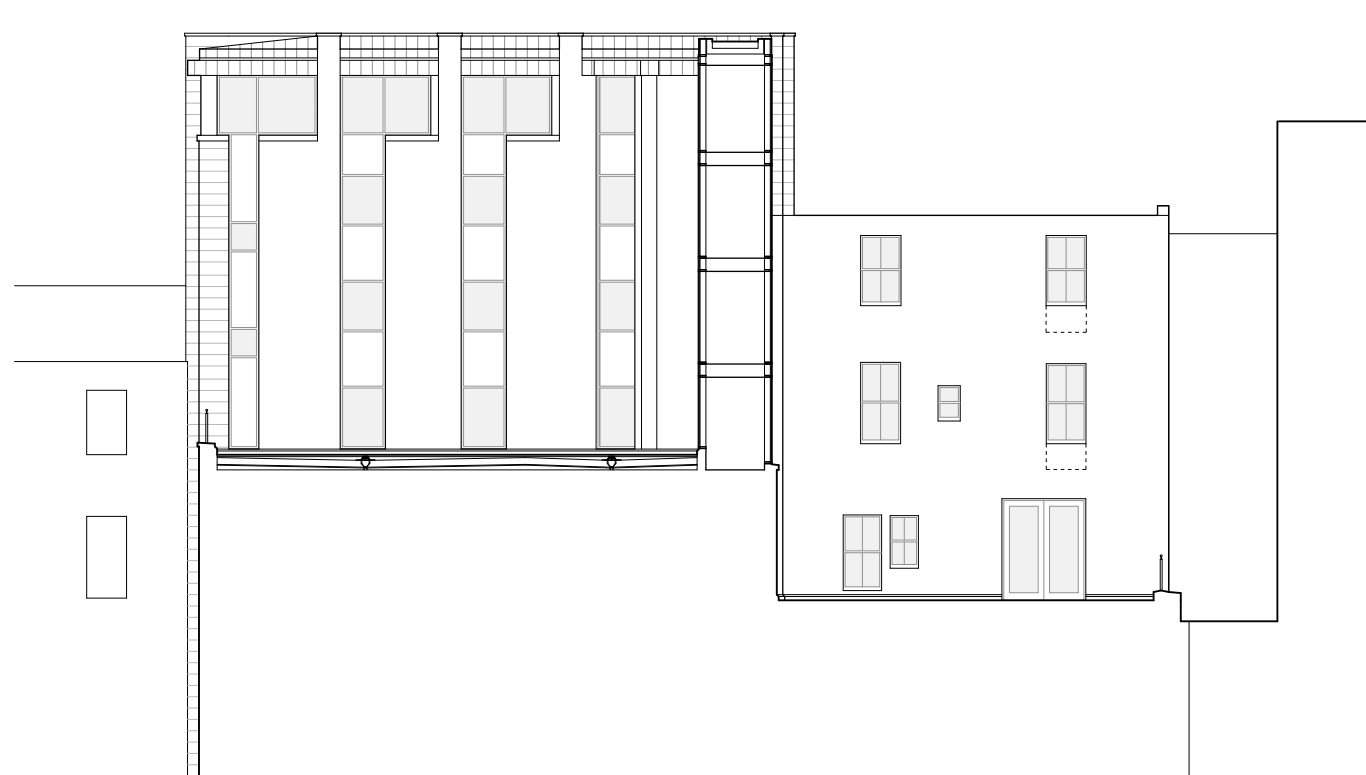
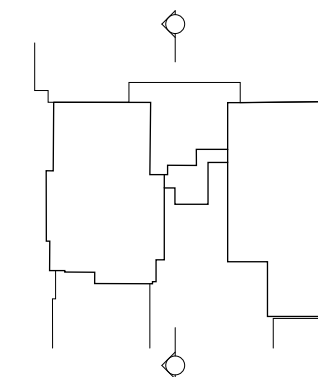
Project/Client	Project No:
Edinburgh	1-7-07049
121 - 123 Princes Street	Dwg No:
-	(-- ) 203
-	Rev:
-	C1
Drawing	Scale:
West Elevation	1:100 @A1
General Arrangement	Drawn By: Date:
-	awl 05.09
-	Checked By: Date:
-	cb 05.09



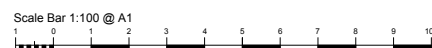
# archial

18 Rothesay Place, Edinburgh, EH3 7SQ  
T: +44 (0)131 226 5123 F: +44 (0)131 226 3042  
www.archialgroup.com

Location :



Section on C.C.  
South Courtyard Elevation



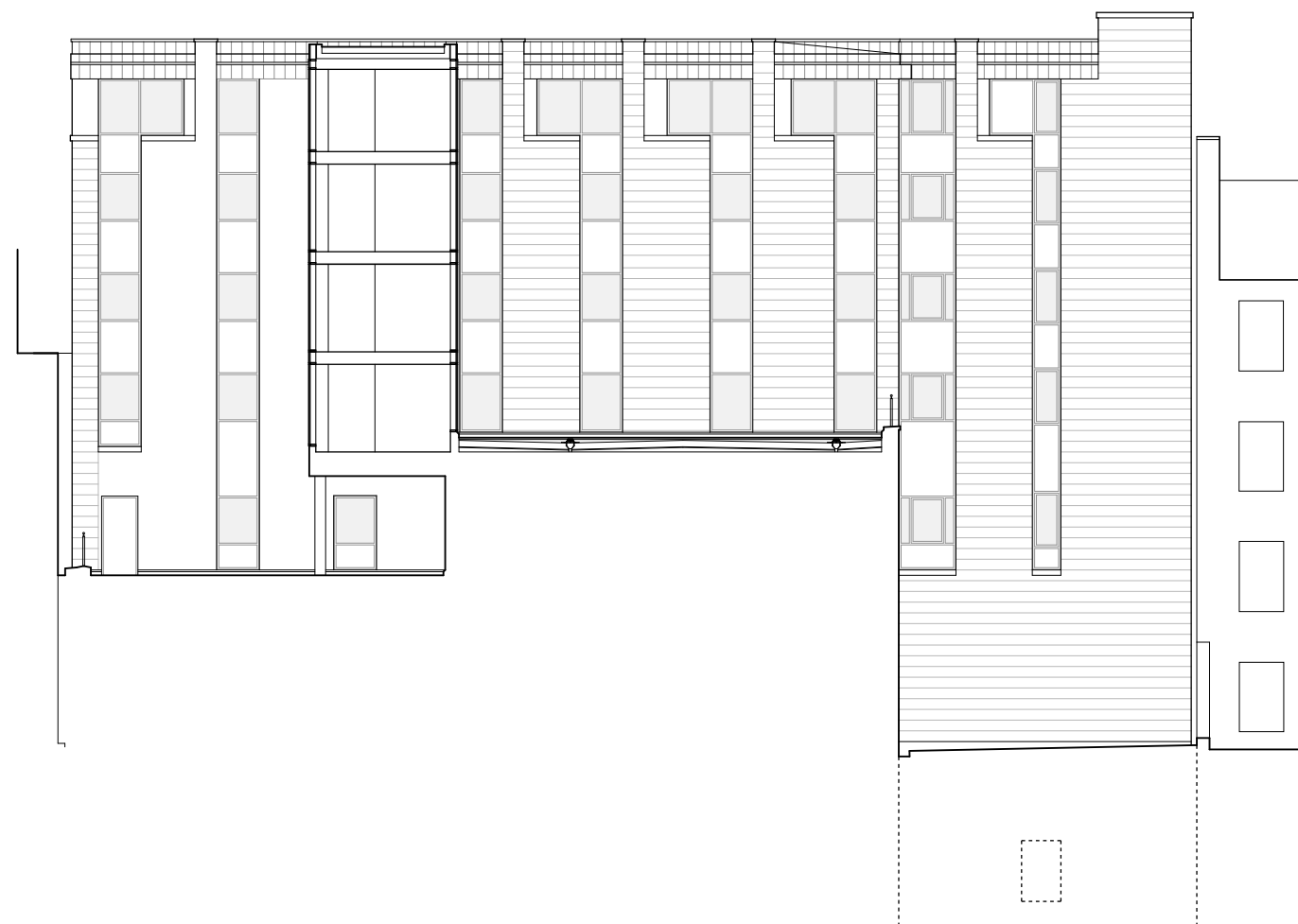
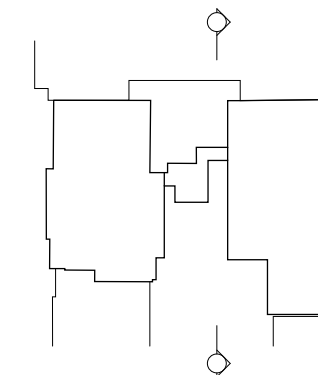
C1	12.02.10	Construction Issue	JFG	CB
PT1	02.02.10	3rd Floor Courtyard roof build up amended. Extent of stone and render amended following meeting with Planners	JH	CB
A	29.09.09	Levels amended. General update to suit GA's	FWAL	CB
Rev.	Date	Details	Drawn	Checked

Issued for:		<b>Construction</b>	
Project/Client	Edinburgh	Project No:	1-7-07049
	121 - 123 Princes Street	Dwg No:	(--) <b>204</b>
	-	Rev:	C1
Drawing	South Courtyard Elevation	Scale:	1:100 @A1
	General Arrangement	Drawn By:	awl
	-	Date:	05.09
	-	Checked By:	cb
	-	Date:	05.09

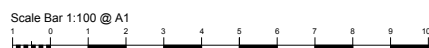
**archial**

18 Rothesay Place, Edinburgh, EH3 7SQ  
T: +44 (0)131 226 5123 F: +44 (0)131 226 3042  
www.archialgroup.com

Location :



Section on D.D.  
North Courtyard Elevation



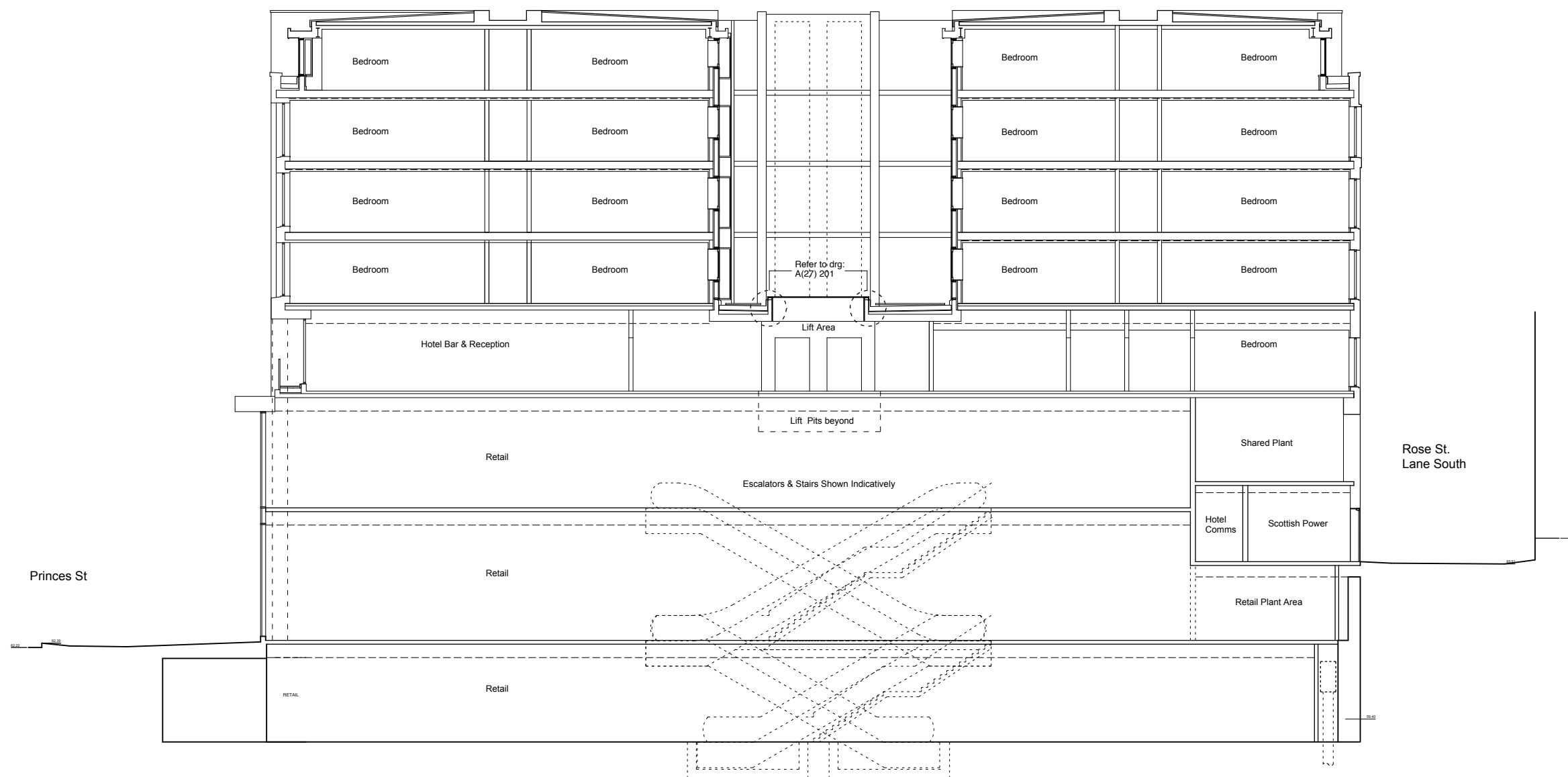
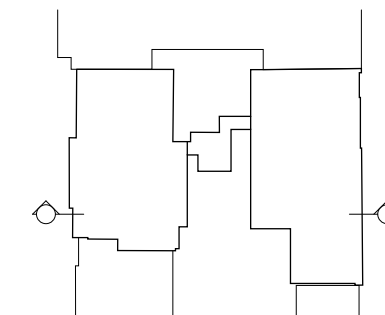
C1	12.02.10	Construction Issue	JFG	CB
PT1	02/02/10	3rd Floor Courtyard roof build up amended. Extent of stone and render amended following meeting with Planners	FH	CB
A	23/09/09	Levels amended. General update to suit GA's	FH/AJ	CB
Rev.	Date	Details	Drawn	Checked

Issued for:		<b>Construction</b>	
Project/Client	Project No:	Edinburgh 121 - 123 Princes Street	
	Dwg No:	(-) 205	
	Rev:	-	
	Scale:	1:100 @A1	
Drawing	Drawn By:	Date:	
	awl	05.09	
	Checked By:	Date:	
	cb	05.09	

**archial**

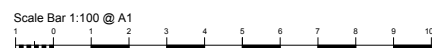
18 Rothesay Place, Edinburgh, EH3 7SQ  
T: +44 (0)131 226 5123 F: +44 (0)131 226 3042  
www.archialgroup.com

Location :



C1	12.02.10	Construction Issue	JFG	CB
C	22/10/09	Reference note added to rooftop on 3rd Floor Courtyard	FH	CB
B	01/09/09	Floor slabs and wall build up amended.	KM	CB
A	27.07.09	4th, 5th, 6th and roof levels raised.	Jfg	cb
Rev.	Date	Details	Drawn	Checked

Issued for:		<b>Construction</b>	
Project/Client	Edinburgh	Project No:	1-7-07049
	121 - 123 Princes Street	Dwg No:	(-- ) 206
		Rev:	C1
Drawing	Section on A.A.	Scale:	1:100 @A1
	General Arrangement	Drawn By:	fh
		Date:	05.09
		Checked By:	cb
		Date:	05.09

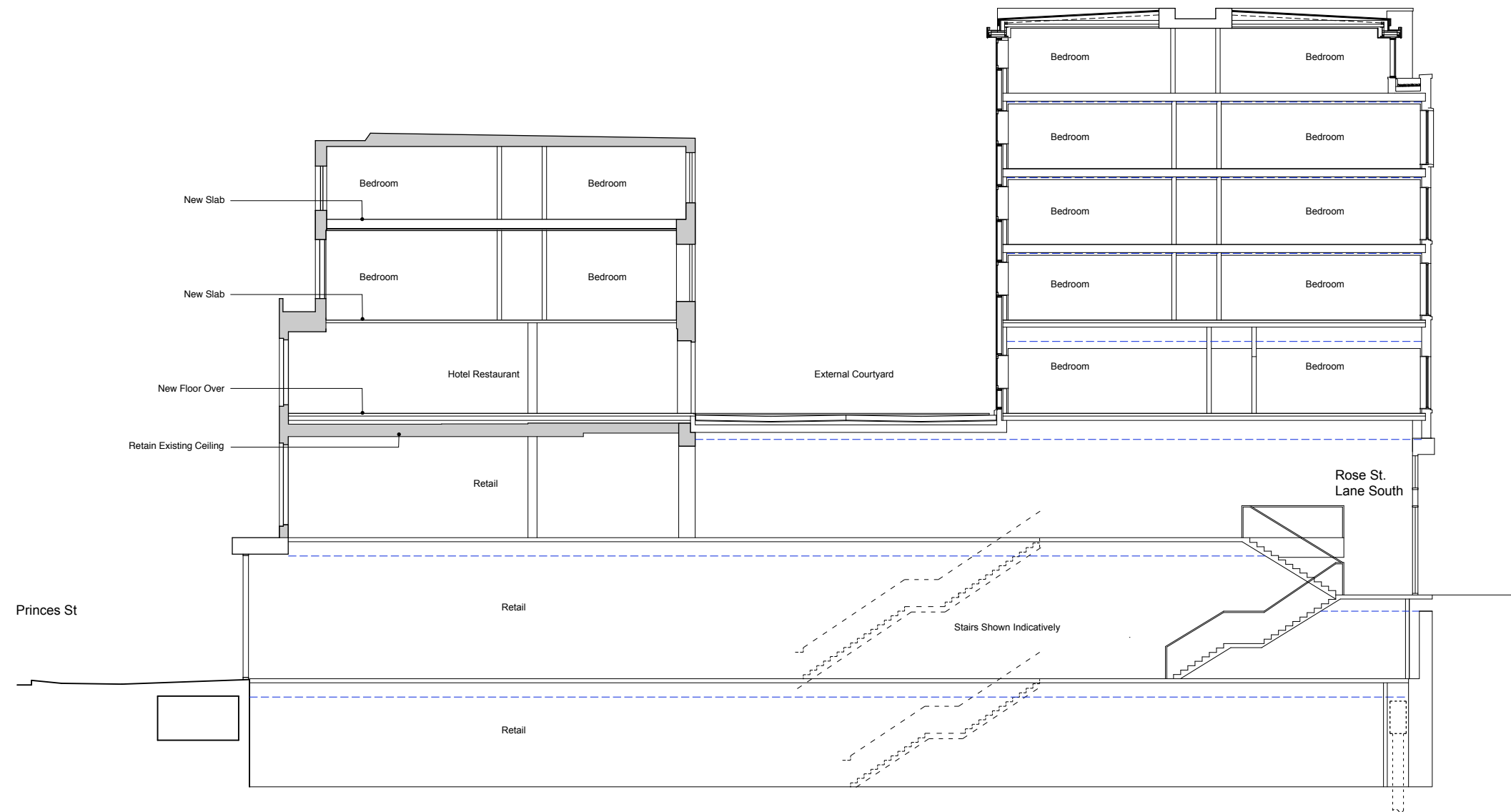
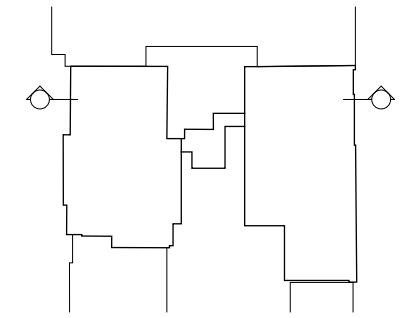


**archial**

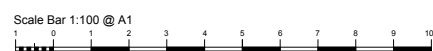
18 Rothesay Place, Edinburgh, EH3 7SQ  
 T: +44 (0)131 226 5123 F: +44 (0)131 226 3042  
 www.archialgroup.com

© Archial Architects Ltd. Contractors must work to figured dimensions which are to be checked on site. Registered Office - Tenison House, 159 - 165 Great Portland Street, London, W1W 9PA. Registered Number - 676792

Location :



Section on B.B.



Rev.	Date	Details	Drawn	Checked
C1	12.02.10	Construction Issue	JFG	CB
C	22/10/09	New ceiling to 2nd floor to be part of the fit out	FH	CB
B	28/08/09	Floor slabs and wall build up amended.	KM	CB
A	17/08/09	Levels Amended To Incorporate A 50mm Increase To Floors 3rd To 6th.	FH	CB

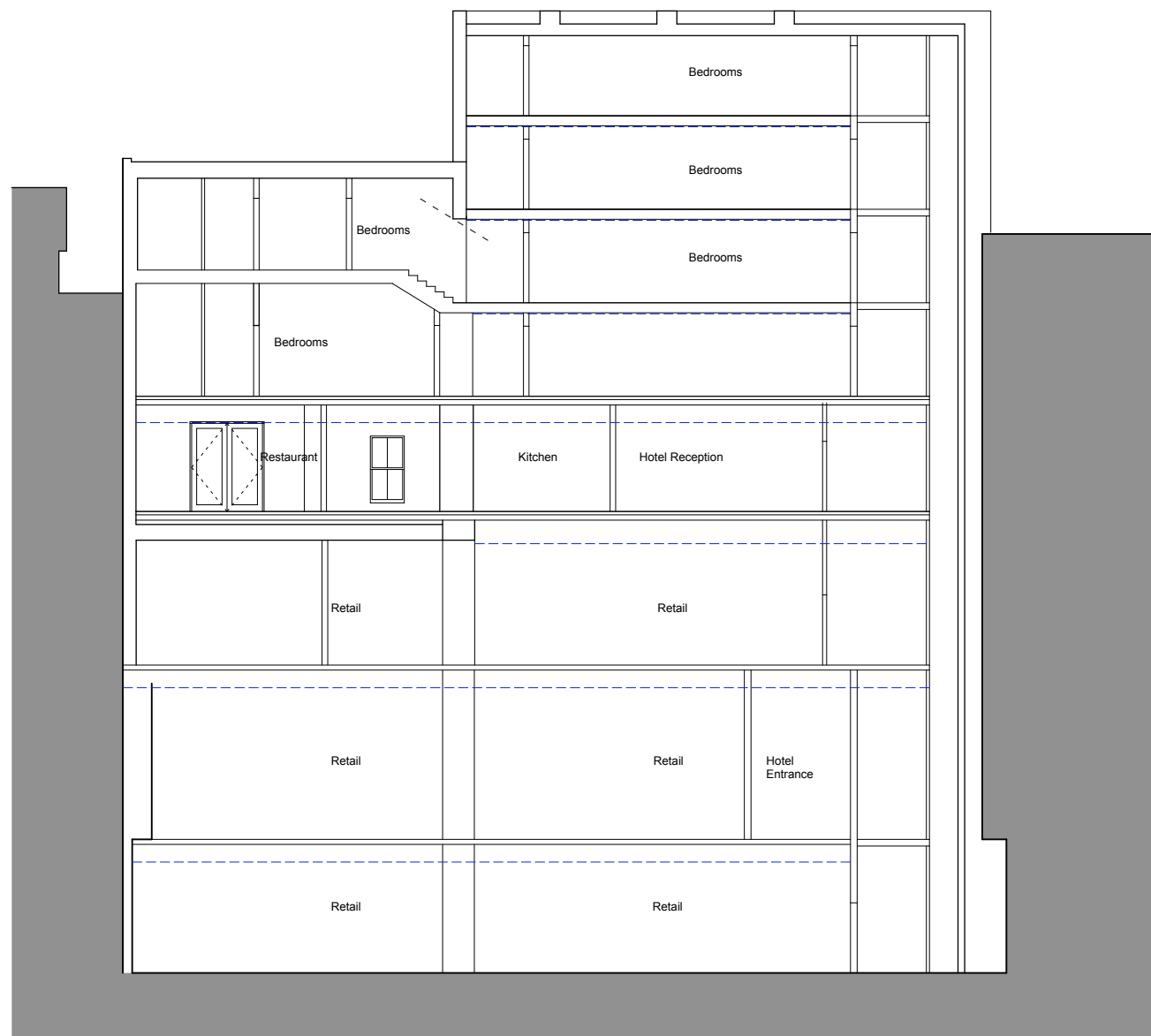
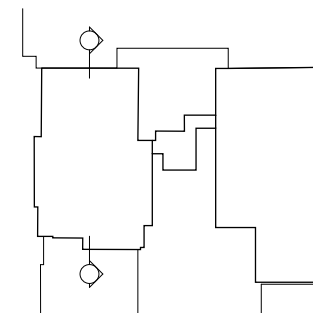
Issued for:		Construction	
Project/Client	Edinburgh	Project No:	1-7-07049
	121 - 123 Princes Street	Dwg No:	(--)-207
		Rev:	C1
Drawing	Section on B.B.	Scale:	1:100 @A1
General Arrangement		Drawn By:	fh
		Date:	05.09
		Checked By:	cb
		Date:	05.09

**archial**

18 Rothesay Place, Edinburgh, EH3 7SQ  
 T: +44 (0)131 226 5123 F: +44 (0)131 226 3042  
 www.archialgroup.com



Location :



C1	12.02.10	Construction Issue	JPG	CB
----	----------	--------------------	-----	----

Rev.	Date	Details	Drawn	Checked
-	-	-	-	-

Issued for:

**Construction**

Project/Client	Edinburgh	Project No:	1-7-07049
	121 - 123 Princes Street	Dwg No:	(-) 208
	-	Rev:	C1
Drawing	Section on C.C.	Scale:	1:100 @A1
General Arrangement	-	Drawn By:	fh
		Date:	05.09
		Checked By:	cb
		Date:	05.09

**archial**

18 Rothesay Place, Edinburgh, EH3 7SQ  
 T: +44 (0)131 226 5123 F: +44 (0)131 226 3042  
 www.archialgroup.com

© Archial Architects Ltd. Contractors must work to figured dimensions which are to be checked on site.  
 Registered Office: Tompkin House, 159 - 160 Great Portland Street, London, W1W 6PA. Registered Number: 0707792

